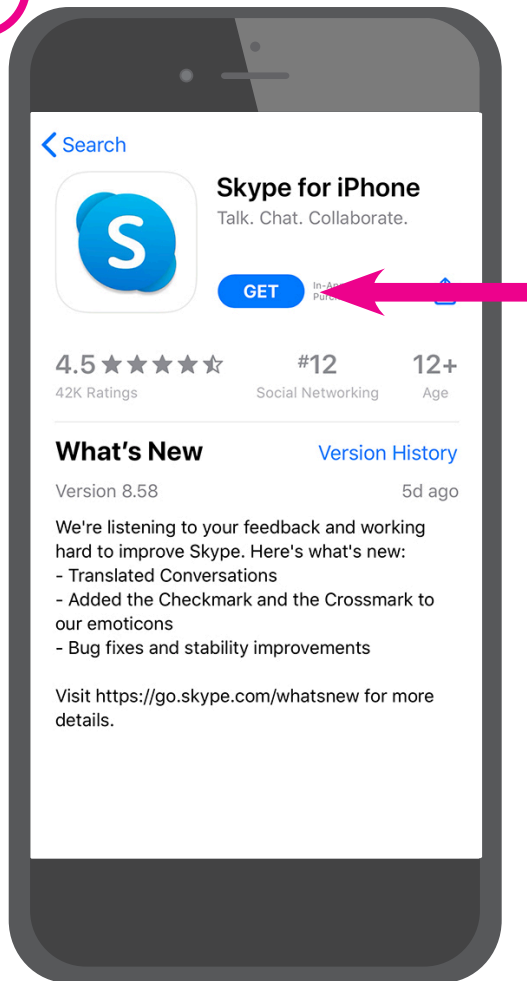


SKYPE ACCOUNT SETUP

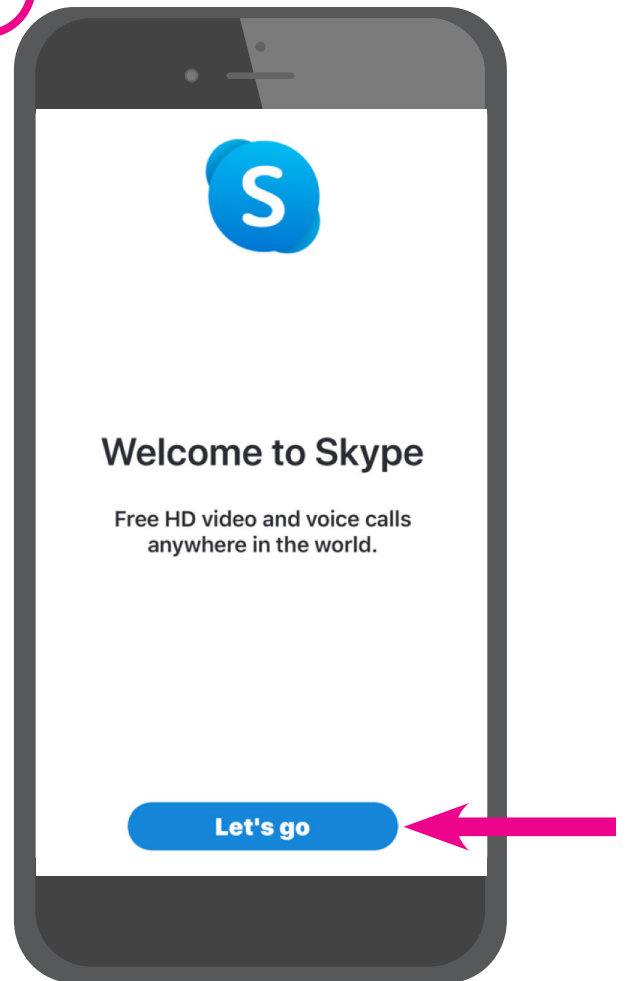
PHONE (ANDROID & IPHONE)

1



Download the app on your smartphone from the app store on iPhones or Google Play on Androids.

2

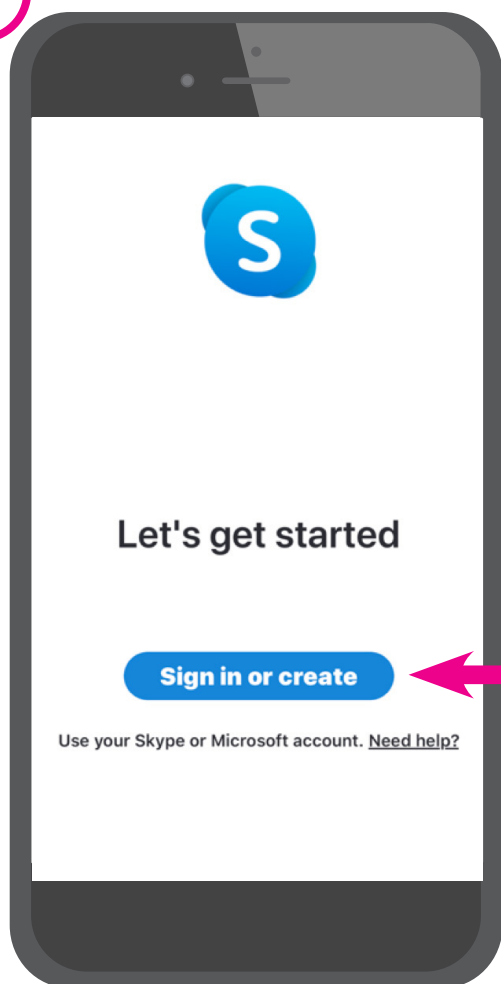


Open the app after installing the app to your phone.

SKYPE ACCOUNT SETUP

PHONE (ANDROID & IPHONE)

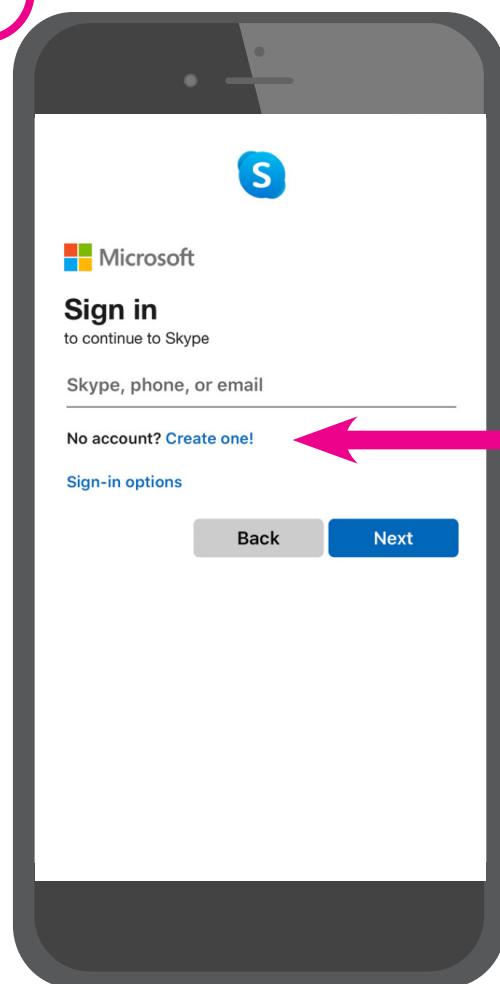
3



You will be taken to this screen.

Click on "Sign in or create"

4



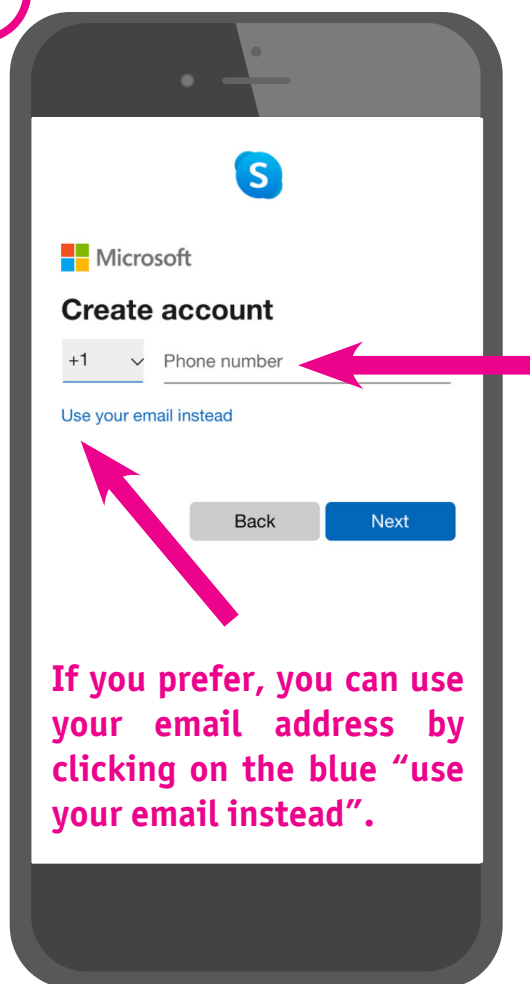
If you do not already have a Skype account, click "Create one!"

If you have a Skype account, skip to page 8.

SKYPE ACCOUNT SETUP

PHONE (ANDROID & IPHONE)

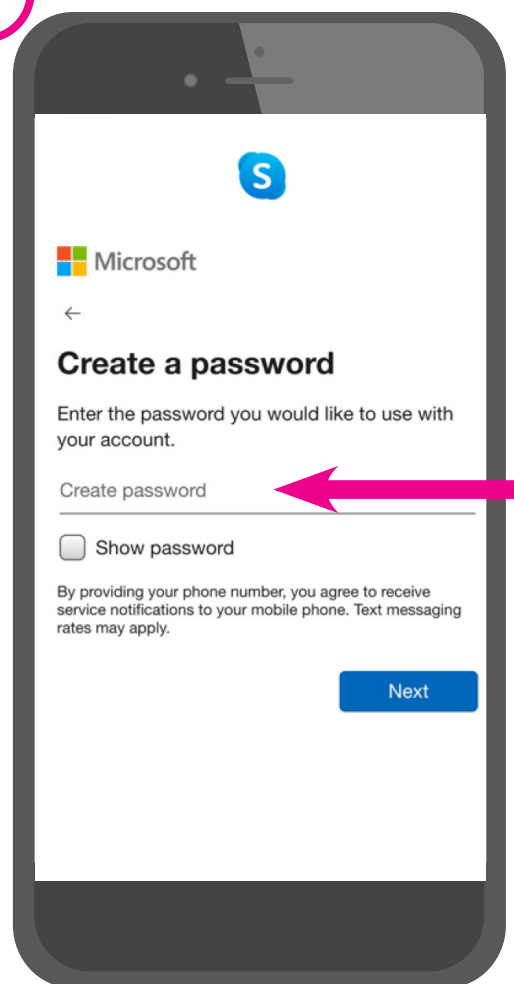
5



On this screen, you will create your account using either your cell phone number or email address.

If you prefer, you can use your email address by clicking on the blue "use your email instead".

6



Next, you will need to create a password that will be used only by you during sign in.

SKYPE ACCOUNT SETUP

PHONE (ANDROID & IPHONE)

7

A smartphone screen showing the Skype account setup process. At the top is the Skype 'S' logo. Below it is the Microsoft logo and a back arrow. The main heading is "What's your name?". Below the heading is a sub-heading: "We need a little more info before you can use this app." There are two text input fields: "First name" and "Last name". Two pink arrows point from the right towards each of these input fields. At the bottom right is a blue "Next" button.

Here you will insert your name as you would like it to read on your Skype account.

This name is what your caller will use to search for your account.

8

A smartphone screen showing the Skype account setup process. At the top is the Skype 'S' logo. Below it is the Microsoft logo and a back arrow. The main heading is "What's your birth date?". Below the heading is a sub-heading: "We need a little more info before you can use this app." There are three dropdown menus: "Country/region" (set to "United States"), "Birthdate" (with sub-drawers for "Month", "Day", and "Year"). A pink arrow points from the right towards the "Next" button at the bottom right.

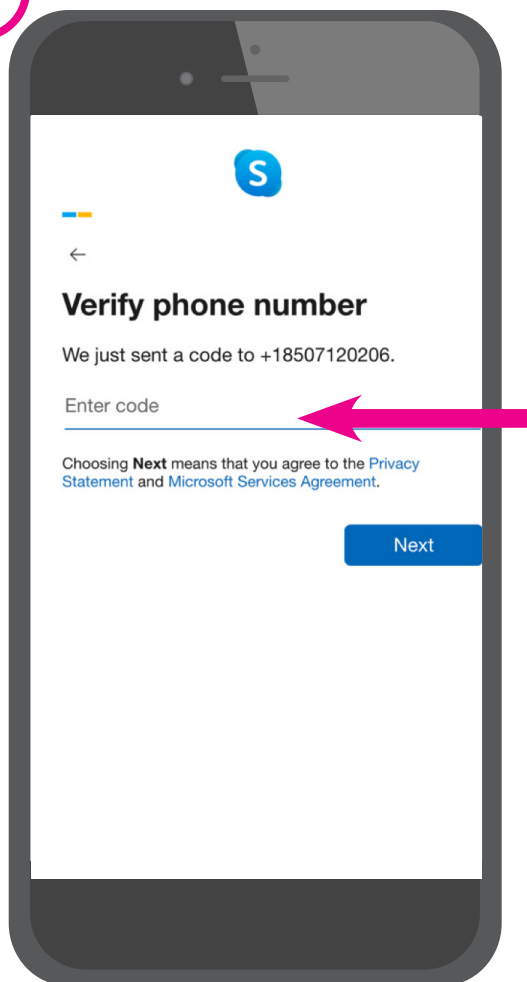
Here you can enter your additional information including your birthday.

Click "Next".

SKYPE ACCOUNT SETUP

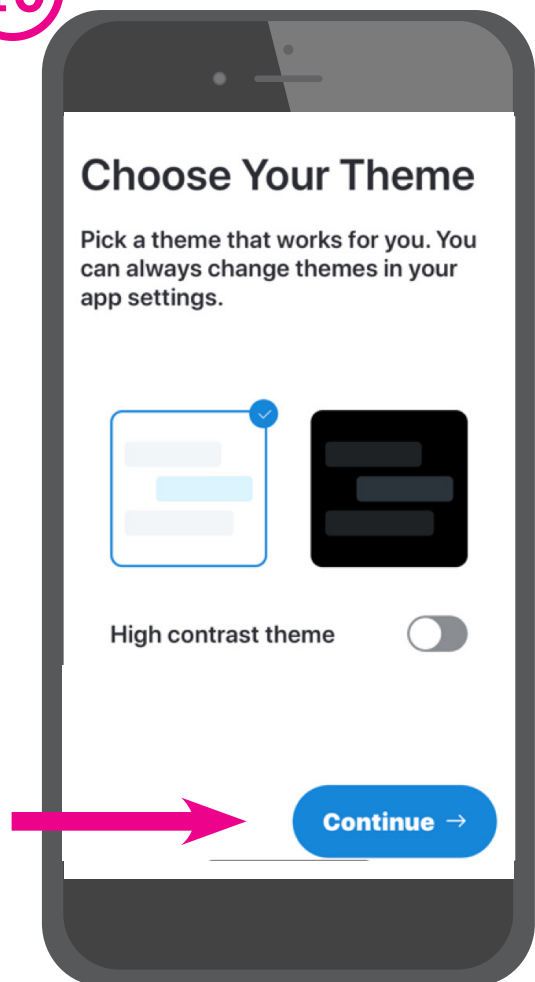
PHONE (ANDROID & IPHONE)

9



The next screen will request you to verify your phone or email is correct. Once you get to this screen, if you used your phone number to set up your account, you will receive a text message with a code that will be entered here. If you chose an email as your account set up, you will receive an email with the code that should be entered on this screen. Click "Next".

10

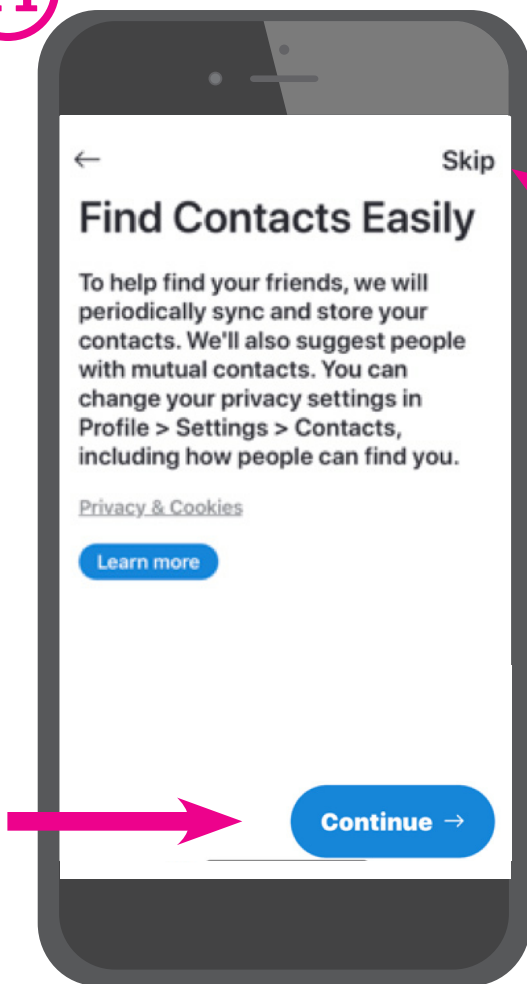


Prompted to select a theme. Once selected, click "Continue".

SKYPE ACCOUNT SETUP

PHONE (ANDROID & IPHONE)

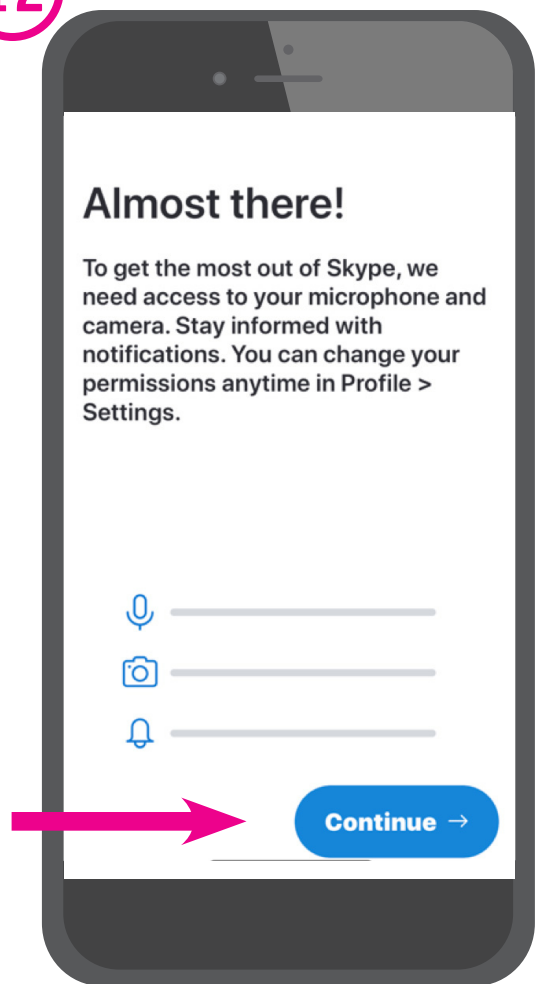
11



You will be prompted to add your contacts. If you decide to do so, click "Continue".

You can skip this step by clicking the "Skip" link in the top right corner.

12



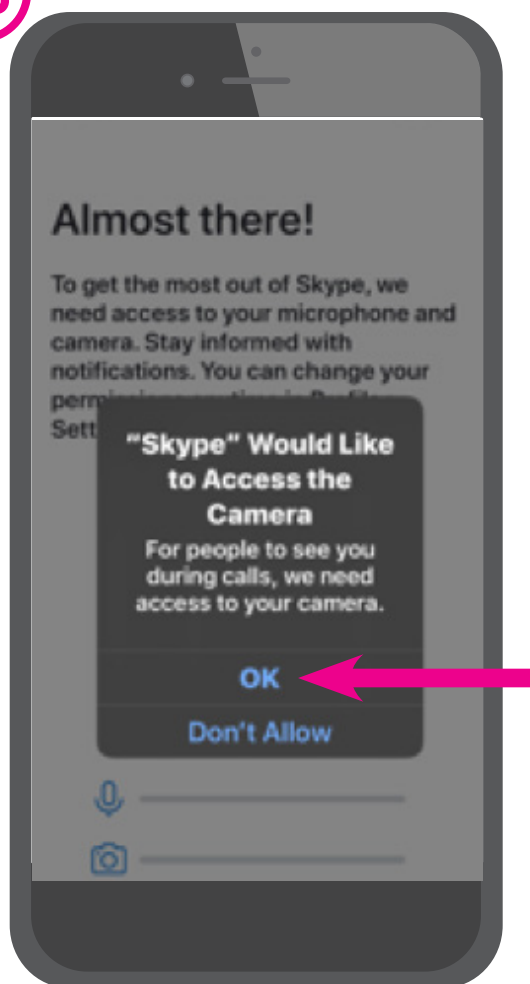
At the next screen, you will be prompted to allow Skype to access your microphone and camera.

Click "Continue" to allow access.

SKYPE ACCOUNT SETUP

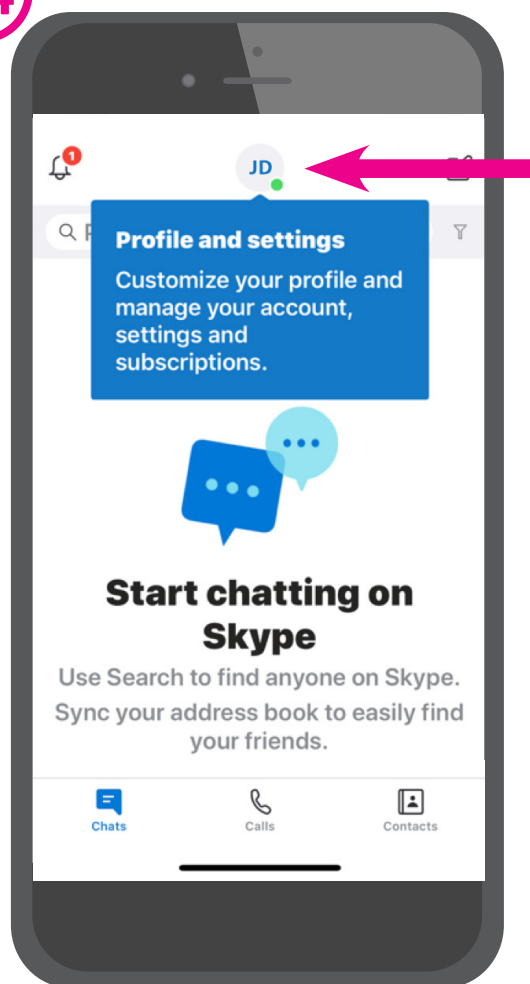
PHONE (ANDROID & IPHONE)

13



You should select "ok".

14



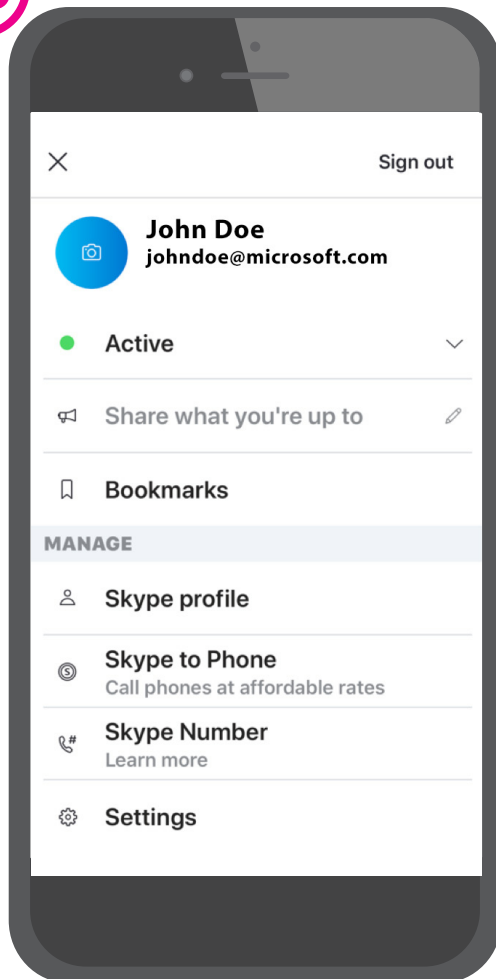
Once complete, your account will open and you will be taken to the home screen.

You can click on the initials icon at the top of this screen to get to your settings.

SKYPE ACCOUNT SETUP

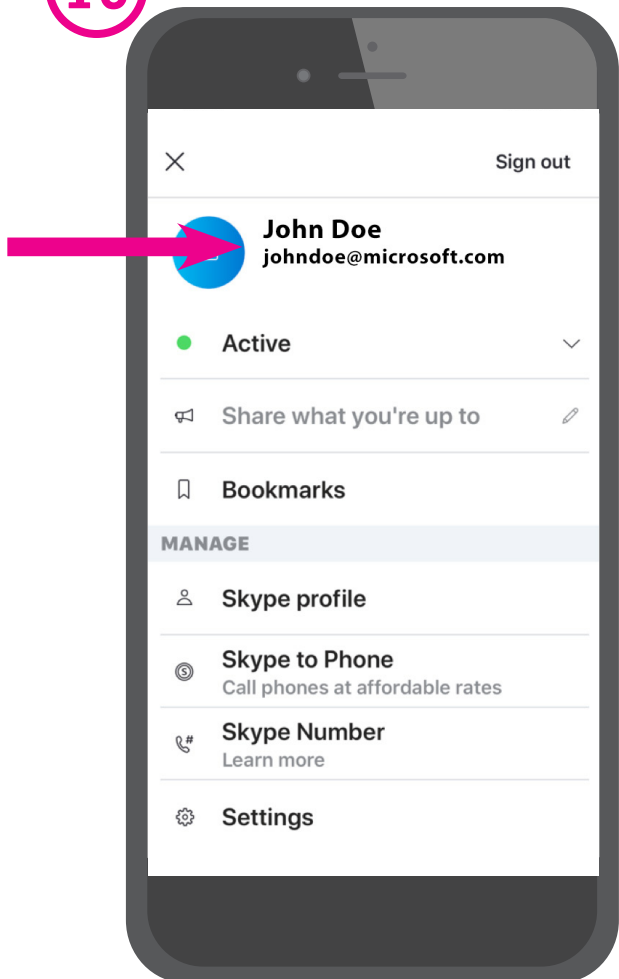
PHONE (ANDROID & IPHONE)

15



Once in your settings, you can review your Skype profile to ensure your name and either phone number and/or email address is correct.

16



You will need to provide either your name as it is spelled in this profile, your phone number that is set to your profile, OR your email address that is set to your profile for your physician to contact you.

In this example, the email is "johndoe@microsoft.com".